

Level 1 Member Schedule		
Mark	Member	Remarks
SB1	530UB	Composite floor beam
SB2	460UB	Composite floor beam
SB3	410UB	Composite floor beam
SB4	610UB	Composite floor beam
SB5	200UB	Composite floor beam
SB6	610UB	Composite floor beam
SB7	530UB	Composite floor beam
PB1	530UB	Composite floor beam
PB2	610UB	Composite floor beam
PB3	360UB	Composite floor beam
PB4	610UB	Composite floor beam
PB5	610UB	Composite floor beam
PB6	610UB	Composite floor beam
EB1	250PFC	Floor beam
EB2	250PFC	Floor beam
SA1	100EA	Seating angle
C1	200SHS	Column
C2	200SHS	Column
C3	250SHS	Column

When sheet printed full size, the scale bar is 100mm.

0 50 100mm

PRELIMINARY ISSUE
NOT FOR CONSTRUCTION

REV.	DATE	DESCRIPTION	DRAFT	ENG.	CHKD
A	03/08/18	Preliminary	SDF	SDF	

WGA
WALLBRIDGE GILBERT
AZTEC
60 Wyatt Street, Adelaide
South Australia 5000
Telephone 08 8223 7433
Email adelaide@wga.com.au

GOODWOOD APARTMENTS

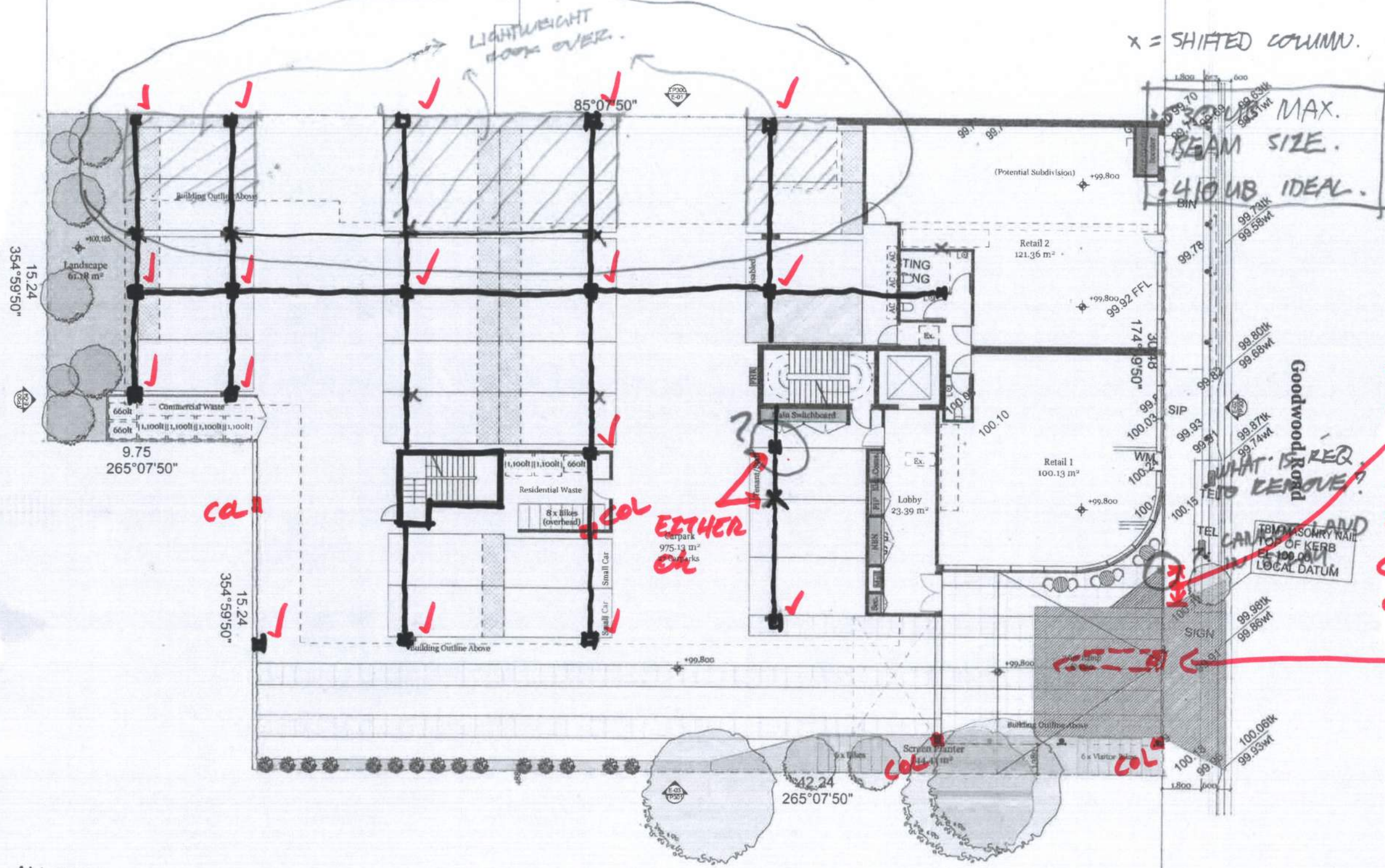
LEVEL 1 FRAMING PLAN

A1
Design SDF Drawn SDF
DRAWING NUMBER
Job Number Sheet No. Rev.
ADL189743 STRSK01 A

REFUL SHEET 20F2
FOR ALTERNATIVE
COLUMN SIZES

ALLOTMENT 118
IN F9510

ALLOTMENT 119
IN F9510



X = SHIFTED COLUMN.

MAX. BEAM SIZE. 410 UB IDEAL.

TO ELIMINATE A COLUMN IN THIS REGION CAN WE INTRODUCE A DIVIDING KERB & COLUMN IN MIDDLE OF DRIVEWAY?

WGA
WALLBRIDGE GILBERT
AZTEC

60 Wyatt Street
Adelaide, SA 5000
Telephone 08 8223 7433

ALLOTMENT 122
IN F9510

SCHOOL
HALL

ALTERNATIVE COLUMN LAYOUT REVIEW
STR5402/A SHEET 2 OF 2
22/8/18

Draft
21/08/2018

Rev. Date By Ctd Description

DKO Architecture Pty Ltd
Suite 2/112 Glen Osmond Road
Buckley Park, VIC 3083
Phone: 08 8661 8800
info@dko.com.au
www.dko.com.au
A/NZ: 6141279760

DKO

Project Name
Project Address

Badgassan
134-136 Goodwood
Road,
Goodwood, SA 5034

Project Number
Drawing Name
Scale
Date

11856
Ground Floor Plan
1:100 @ A1, 1:200 @ A3
21/08/2018

Client

Client Company

Drawing Number
Revision

TP200